

#### NOTES:

- ALL DIMENSIONS ARE IN MILLIMETERS, LEVELS ARE IN METERS UNLESS OTHERWISE.
- DIMENSIONS SHALL NOT BE SCALED FROM THE DRAWING. ONLY WRITTEN DIMENSIONS SHALL BE FOLLOWED.
- FOR PORTAL BEAM AND BEARING DETAILS REFER SEPARATE DRAWING.
- REINFORCEMENT STEEL SHALL BE HYSD BARS OF GRADE Fe500 FOR ALL R.C.C WORKS. DURABILITY REQUIREMENTS FOR CORROSION CONTROL SHALL BE AS PER IRS CBC AND AS PER TENDER.
- MINIMUM CLEAR COVER TO ANY REINFORCEMENT SHALL BE 75MM FOR PILE & PILECAP & 50MM FOR PIER. COVER TO BE MEASURED FROM INNER MOST SURFACE OF GROUT IF ANY.
- CLEAR COVER BETWEEN PILE CUT OFF TO MAIN STEEL BE 25MM.
- DEVELOPMENT LENGTH SHALL BE AS GIVEN BELOW :

GRADE OF CONCRETE	M35	M50
DEVELOPMENT LENGTH	46 $\phi$	41 $\phi$
LAP LENGTH	65 $\phi$	58 $\phi$

WHERE  $\phi$  IS THE DIA. OF BAR.  
CENTER DISTANCE OF THE SPLICES SHALL NOT BE LESS THAN 1.3 TIMES LAP LENGTH.
- LAP SHALL GENERALLY BE AVOIDED, IF REQUIRED LAPS SHALL BE STAGGERED & NOT MORE THAN 50% OF BAR SHALL BE LAPPED AT ANY SECTION.
- BENDING OF REINFORCEMENT SHALL CONFIRM TO IS:2502 LATEST REVISION.
- LAPPING IS NOT ALLOWED IN PILE UP TO DEPTH OF FIXITY.

#### LEGENDS:

- TOP REINFORCEMENT  
BOTTOM REINFORCEMENT  
H HYSD Fe500 BARS  
REINF REINFORCEMENT  
Ld DEVELOPMENT LENGTH

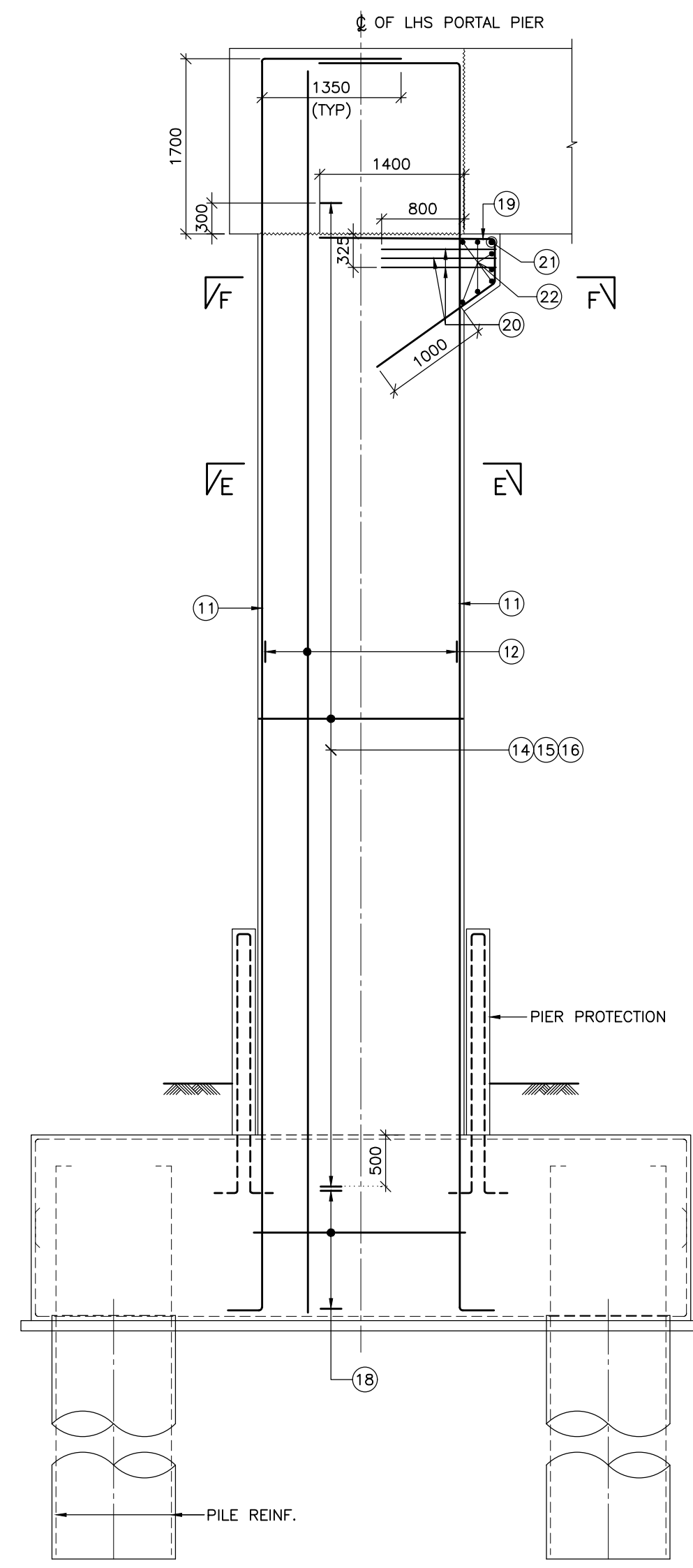
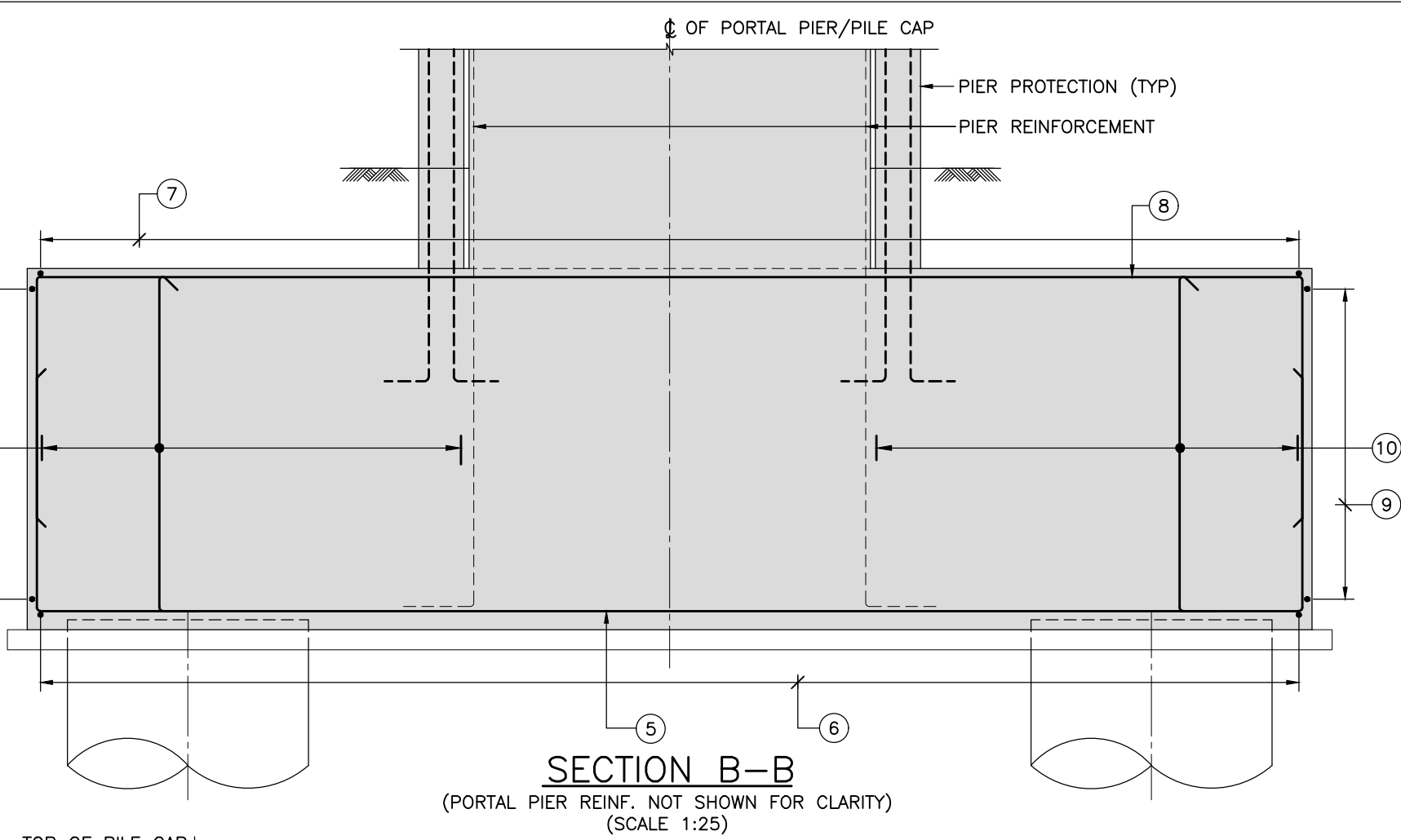
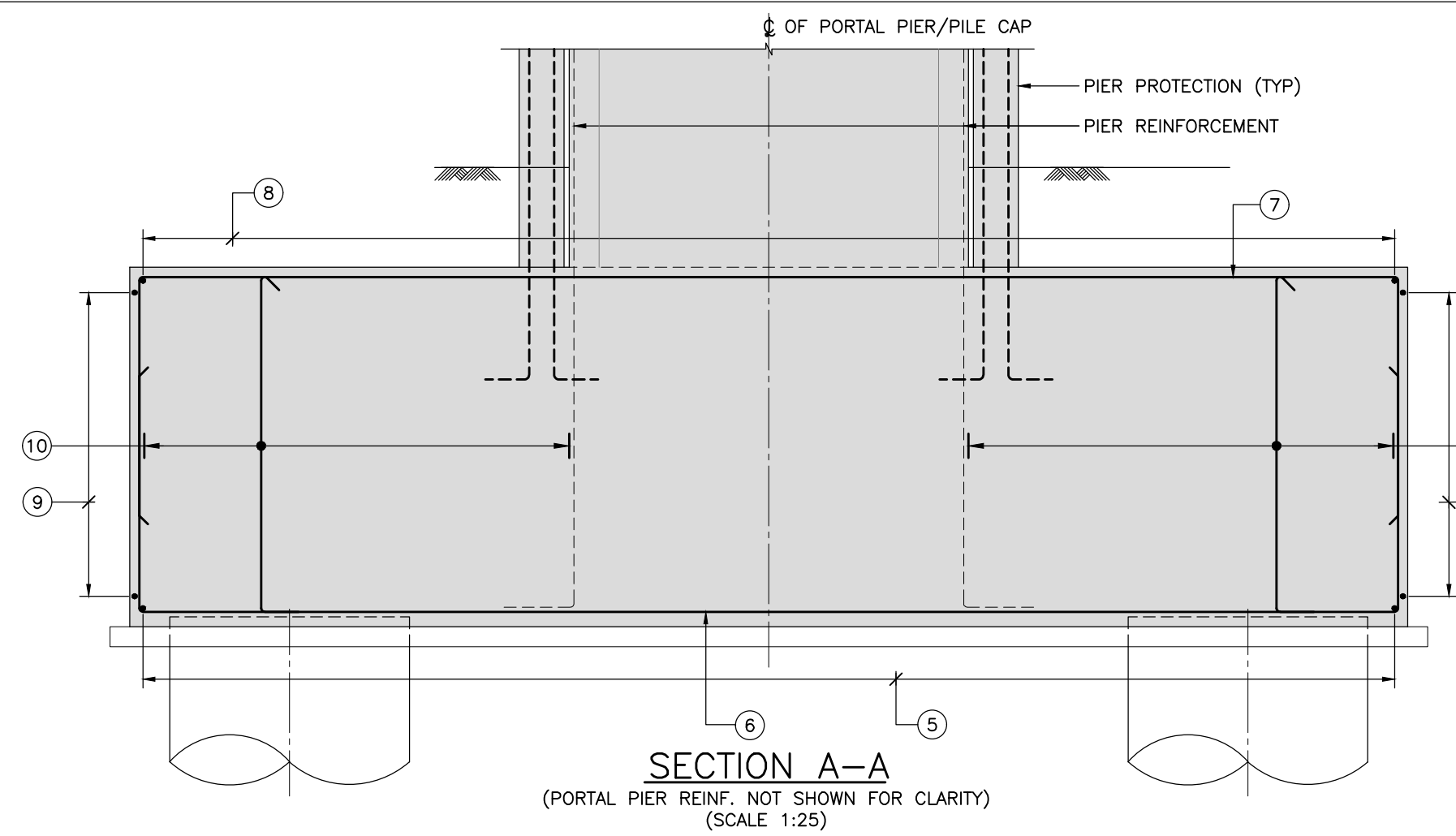
#### SCHEDULE OF REINFORCEMENT

ITEM	BAR MARK	BAR DIA.	SHAPE	TOTAL NOS./ SPACINGS	REMARKS
PILE	1	25	150	20 Nos.	VERTICAL BAR
	10	20		20 Nos.	VERTICAL BAR
	2	10		115 PITCH HELICAL REINFORCEMENT	
	3	16		1500 c/c	RING
PILE CAP	4	16		300 c/c	RING
	5	25	1200	125 c/c	BOTTOM BAR
	6	25	1200	125 c/c	BOTTOM BAR
	7	25	1200	125 c/c	TOP BAR
PIER	8	25	1200	125 c/c	TOP BAR
	9	12		140 c/c	SIDE FACE BAR
	10	16		250 c/c	LONGITUDINAL TRANSVERSE DIRECTION
	11	25	350	2x17 Nos.	
	12	32	350	2x13 Nos.	
	13				NOT USED
	14	10		150 c/c	6 LEGGED
	15	10		150 c/c	6 LEGGED
	16	10		150 c/c	2 LEGGED
	17				NOT USED
PIER	18	10		150 c/c	2 LEGGED
	19	20		125 c/c	
	20	16		3 LAYER	6 LEGGED
	21	32		1 No.	
	22	10		7 Nos.	

#### REFERENCE DRAWINGS:

- 022077-BSRP-CR2-C-V0-GEN-10-2007 TO 2015...GENERAL ARRANGEMENT DRAWING FOR VIADUCT PORTION FOR CH. 13+563.903km TO CH. 16+461.903km
- 022077-BSRP-CR2-C-V0-0-20-1655...DIMENSION DETAILS OF FOUNDATION AND SUBSTRUCTURE FOR PORTAL PIER PP181-2
- 022077-BSRP-CR2-C-V0-0-20-1657...DIMENSION DETAILS OF PORTAL BEAM FOR PORTAL PIER PP181-2
- 022077-BSRP-CR2-C-V0-0-20-1762...REINFORCEMENT DETAILS OF PORTAL BEAM FOR PORTAL PIER PP181-2
- 022077-BSRP-CR2-C-V0-GEN-20-5000...GENERAL NOTES
- 022077-BSRP-CR2-C-V0-GEN-10-1652...DIMENSIONAL & REINFORCEMENT DETAIL OF PIER PROTECTION
- 022077-BSRP-CR2-C-V0-GEN-10-1738...TYPICAL DETAIL OF EARTHING BAR
- 022077-BSRP-CR2-C-V0-GEN-30-1738...TYPICAL DETAIL OF DRAINAGE SCHEME AT PORTAL PIER LOCATION
- 022077-BSRP-CR2-C-V0-GEN-10-1657 & 022077-BSRP-CR2-C-V0-GEN-10-1658 ...INTERFACE DETAILS DRAWING.

**GOOD FOR CONSTRUCTION**



#### NOTES:

- ALL DIMENSIONS ARE IN MILLIMETERS, LEVELS ARE IN METERS UNLESS OTHERWISE.
- DIMENSIONS SHALL NOT BE SCALED FROM THE DRAWING. ONLY WRITTEN DIMENSIONS SHALL BE FOLLOWED.
- FOR PORTAL BEAM AND BEARING DETAILS REFER SEPARATE DRAWING.
- REINFORCEMENT STEEL SHALL BE HYSD BARS OF GRADE Fe500 FOR ALL R.C.C WORKS. DURABILITY REQUIREMENTS FOR CORROSION CONTROL SHALL BE AS PER IRS CBC AND AS PER TENDER.
- MINIMUM CLEAR COVER TO ANY REINFORCEMENT SHALL BE 75MM FOR PILE & PILECAP & 50MM FOR PIER. COVER TO BE MEASURED FROM INNER MOST SURFACE OF GROUT IF ANY.
- CLEAR COVER BETWEEN PILE CUT OFF TO MAIN STEEL BE 25MM.
- DEVELOPMENT LENGTH SHALL BE AS GIVEN BELOW :

GRADE OF CONCRETE	M35	M50
DEVELOPMENT LENGTH	46 $\phi$	41 $\phi$
LAP LENGTH	65 $\phi$	58 $\phi$

WHERE  $\phi$  IS THE DIA. OF BAR.  
CENTER DISTANCE OF THE SPLICES SHALL NOT BE LESS THAN 1.3 TIMES LAP LENGTH.
- LAP SHALL GENERALLY BE AVOIDED, IF REQUIRED LAPS SHALL BE STAGGERED & NOT MORE THAN 50% OF BAR SHALL BE LAPPED AT ANY SECTION.
- BENDING OF REINFORCEMENT SHALL CONFIRM TO IS:2502 LATEST REVISION.
- LAPPING IS NOT ALLOWED IN PILE UP TO DEPTH OF FIXITY.

#### LEGENDS:

- TOP REINFORCEMENT  
BOTTOM REINFORCEMENT  
H HYSD Fe500 BARS  
REINF REINFORCEMENT  
Ld DEVELOPMENT LENGTH

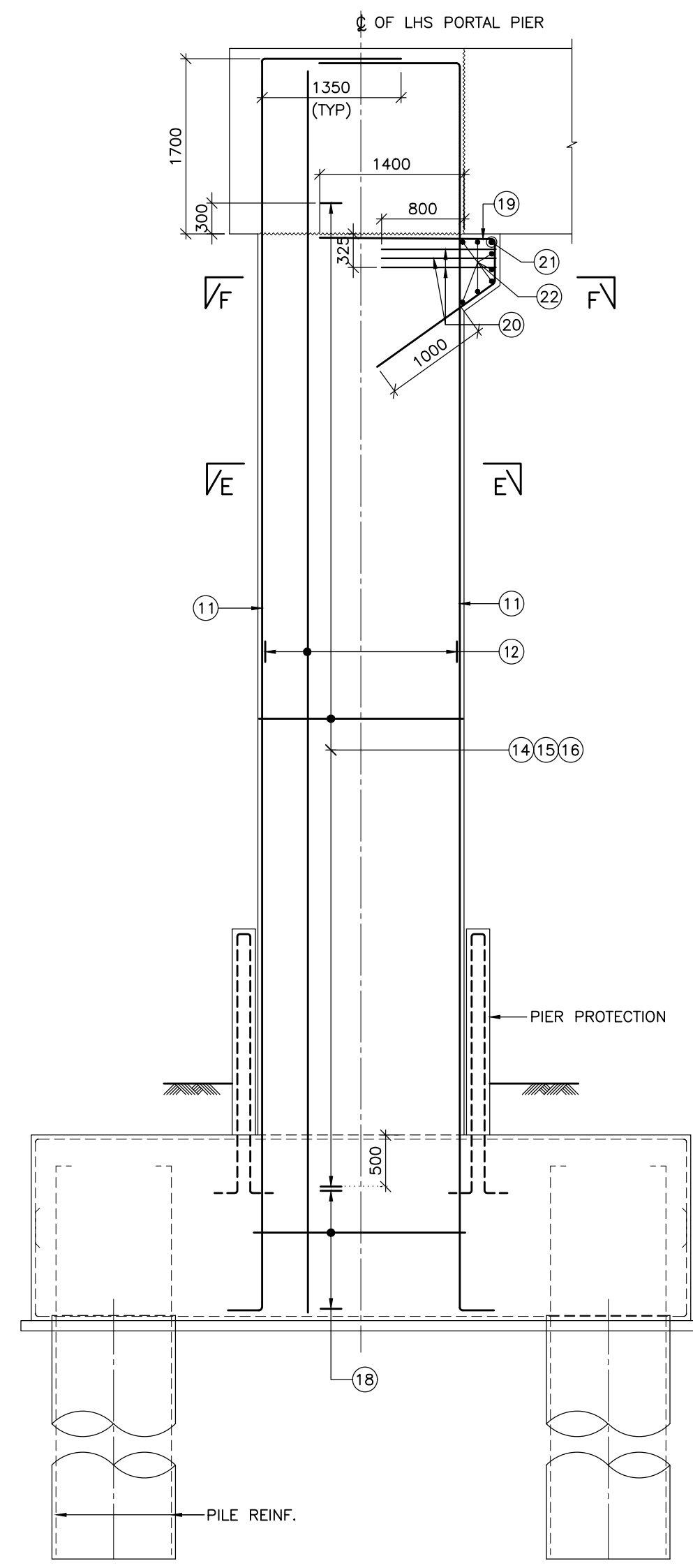
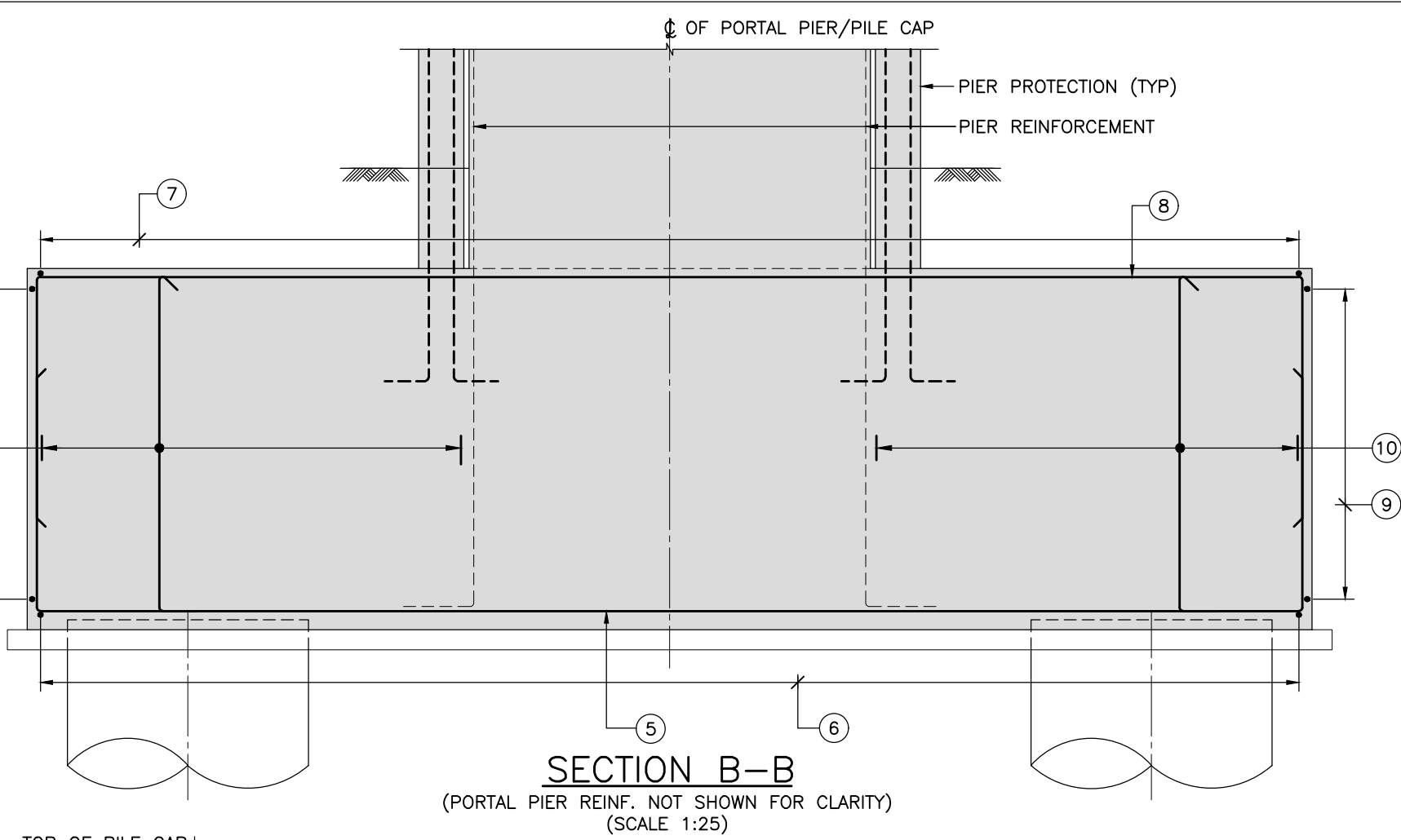
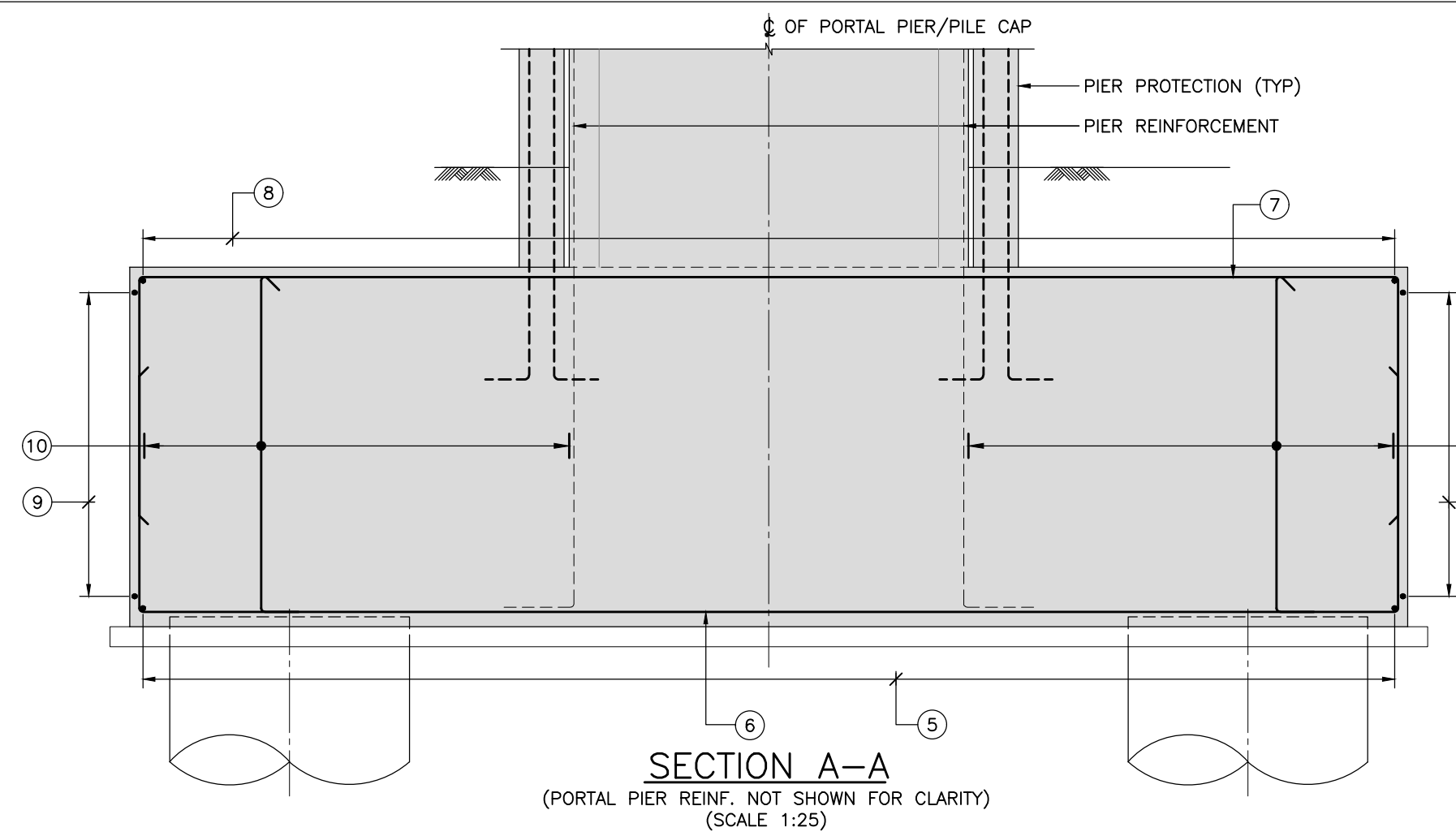
#### SCHEDULE OF REINFORCEMENT

ITEM	BAR MARK	BAR DIA.	SHAPE	TOTAL NOS./ SPACINGS	REMARKS
PILE	1	25	150	20 Nos.	VERTICAL BAR
	10	20		20 Nos.	VERTICAL BAR
	2	10		115 PITCH HELICAL REINFORCEMENT	
	3	16		1500 c/c	RING
PILE CAP	4	16		300 c/c	RING
	5	25	1200	125 c/c	BOTTOM BAR
	6	25	1200	125 c/c	BOTTOM BAR
	7	25	1200	125 c/c	TOP BAR
PIER	8	25	1200	125 c/c	TOP BAR
	9	12		140 c/c	SIDE FACE BAR
	10	16		250 c/c	LONGITUDINAL TRANSVERSE DIRECTION
	11	25	350	2x17 Nos.	
	12	32	350	2x13 Nos.	
	13				NOT USED
	14	10		150 c/c	6 LEGGED
	15	10		150 c/c	6 LEGGED
	16	10		150 c/c	2 LEGGED
	17				NOT USED
PIER	18	10		150 c/c	2 LEGGED
	19	20		125 c/c	
	20	16		3 LAYER	6 LEGGED
	21	32		1 No.	
	22	10		7 Nos.	

#### REFERENCE DRAWINGS:

- 022077-BSRP-CR2-C-V0-GEN-10-2007 TO 2015...GENERAL ARRANGEMENT DRAWING FOR VIADUCT PORTION FOR CH. 13+563.903km TO CH. 16+461.903km
- 022077-BSRP-CR2-C-V0-0-20-1655...DIMENSION DETAILS OF FOUNDATION AND SUBSTRUCTURE FOR PORTAL PIER PP181-2
- 022077-BSRP-CR2-C-V0-0-20-1657...DIMENSION DETAILS OF PORTAL BEAM FOR PORTAL PIER PP181-2
- 022077-BSRP-CR2-C-V0-0-20-1762...REINFORCEMENT DETAILS OF PORTAL BEAM FOR PORTAL PIER PP181-2
- 022077-BSRP-CR2-C-V0-GEN-20-5000...GENERAL NOTES
- 022077-BSRP-CR2-C-V0-GEN-10-1652...DIMENSIONAL & REINFORCEMENT DETAIL OF PIER PROTECTION
- 022077-BSRP-CR2-C-V0-GEN-10-1738...TYPICAL DETAIL OF EARTHING BAR
- 022077-BSRP-CR2-C-V0-GEN-30-1738...TYPICAL DETAIL OF DRAINAGE SCHEME AT PORTAL PIER LOCATION
- 022077-BSRP-CR2-C-V0-GEN-10-1657 & 022077-BSRP-CR2-C-V0-GEN-10-1658 ...INTERFACE DETAILS DRAWING.

**GOOD FOR CONSTRUCTION**



#### NOTES:

- ALL DIMENSIONS ARE IN MILLIMETERS, LEVELS ARE IN METERS UNLESS OTHERWISE.
- DIMENSIONS SHALL NOT BE SCALED FROM THE DRAWING. ONLY WRITTEN DIMENSIONS SHALL BE FOLLOWED.
- FOR PORTAL BEAM AND BEARING DETAILS REFER SEPARATE DRAWING.
- REINFORCEMENT STEEL SHALL BE HYSD BARS OF GRADE Fe500 FOR ALL R.C.C WORKS. DURABILITY REQUIREMENTS FOR CORROSION CONTROL SHALL BE AS PER IRS CBC AND AS PER TENDER.
- MINIMUM CLEAR COVER TO ANY REINFORCEMENT SHALL BE 75MM FOR PILE & PILECAP & 50MM FOR PIER. COVER TO BE MEASURED FROM INNER MOST SURFACE OF GROUT IF ANY.
- CLEAR COVER BETWEEN PILE CUT OFF TO MAIN STEEL BE 25MM.
- DEVELOPMENT LENGTH SHALL BE AS GIVEN BELOW :

GRADE OF CONCRETE	M35	M50
DEVELOPMENT LENGTH	46 $\phi$	41 $\phi$
LAP LENGTH	65 $\phi$	58 $\phi$

WHERE  $\phi$  IS THE DIA. OF BAR.  
CENTER DISTANCE OF THE SPLICES SHALL NOT BE LESS THAN 1.3 TIMES LAP LENGTH.
- LAP SHALL GENERALLY BE AVOIDED, IF REQUIRED LAPS SHALL BE STAGGERED & NOT MORE THAN 50% OF BAR SHALL BE LAPPED AT ANY SECTION.
- BENDING OF REINFORCEMENT SHALL CONFIRM TO IS:2502 LATEST REVISION.
- LAPPING IS NOT ALLOWED IN PILE UP TO DEPTH OF FIXITY.

#### LEGENDS:

- TOP REINFORCEMENT  
BOTTOM REINFORCEMENT  
H HYSD Fe500 BARS  
REINF REINFORCEMENT  
Ld DEVELOPMENT LENGTH

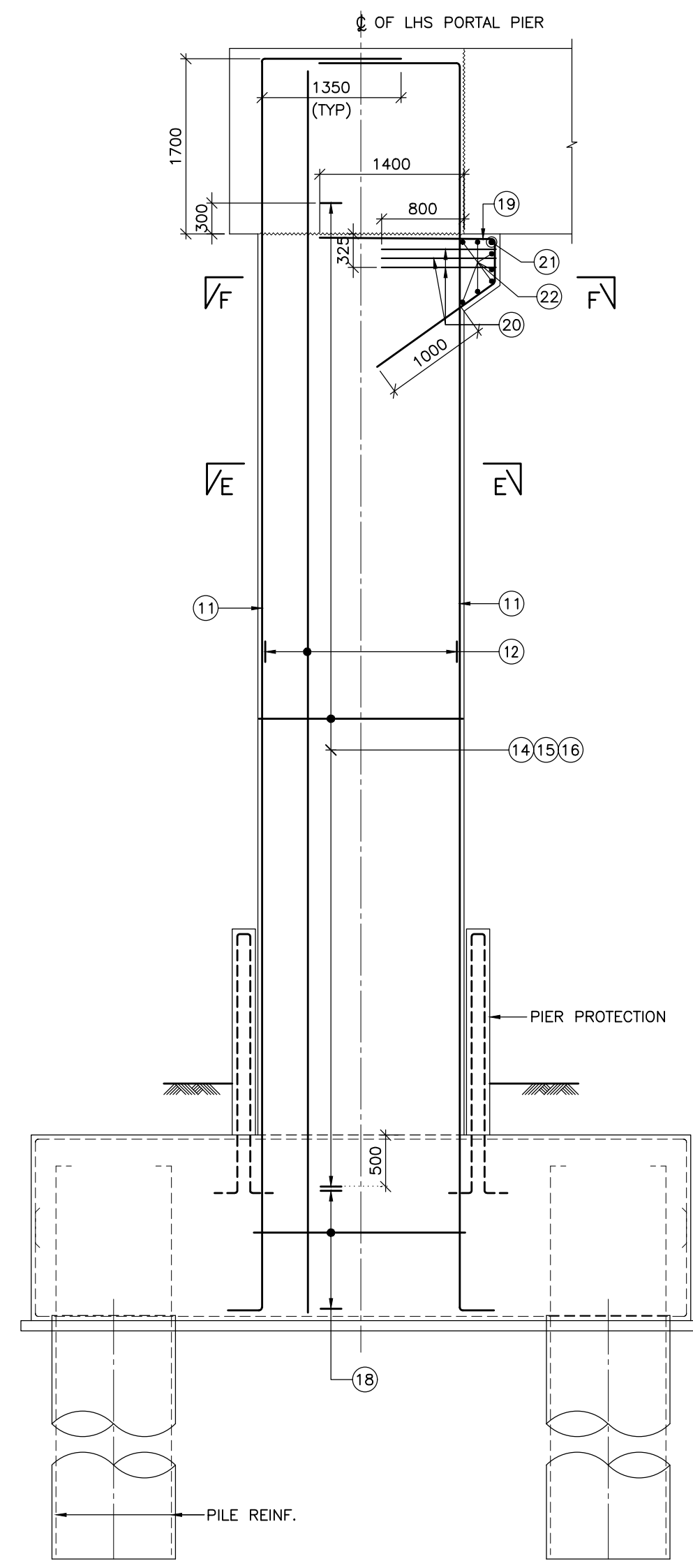
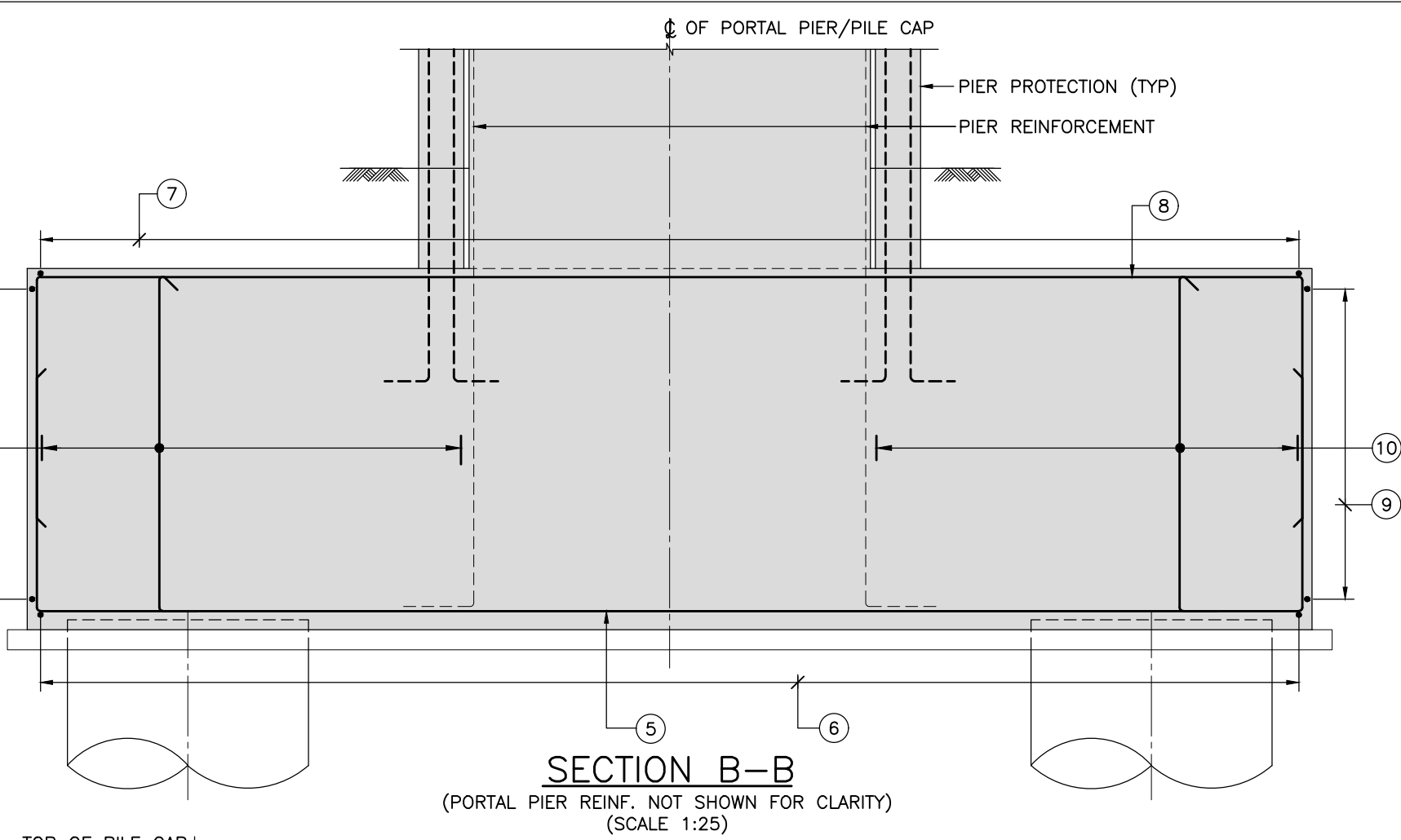
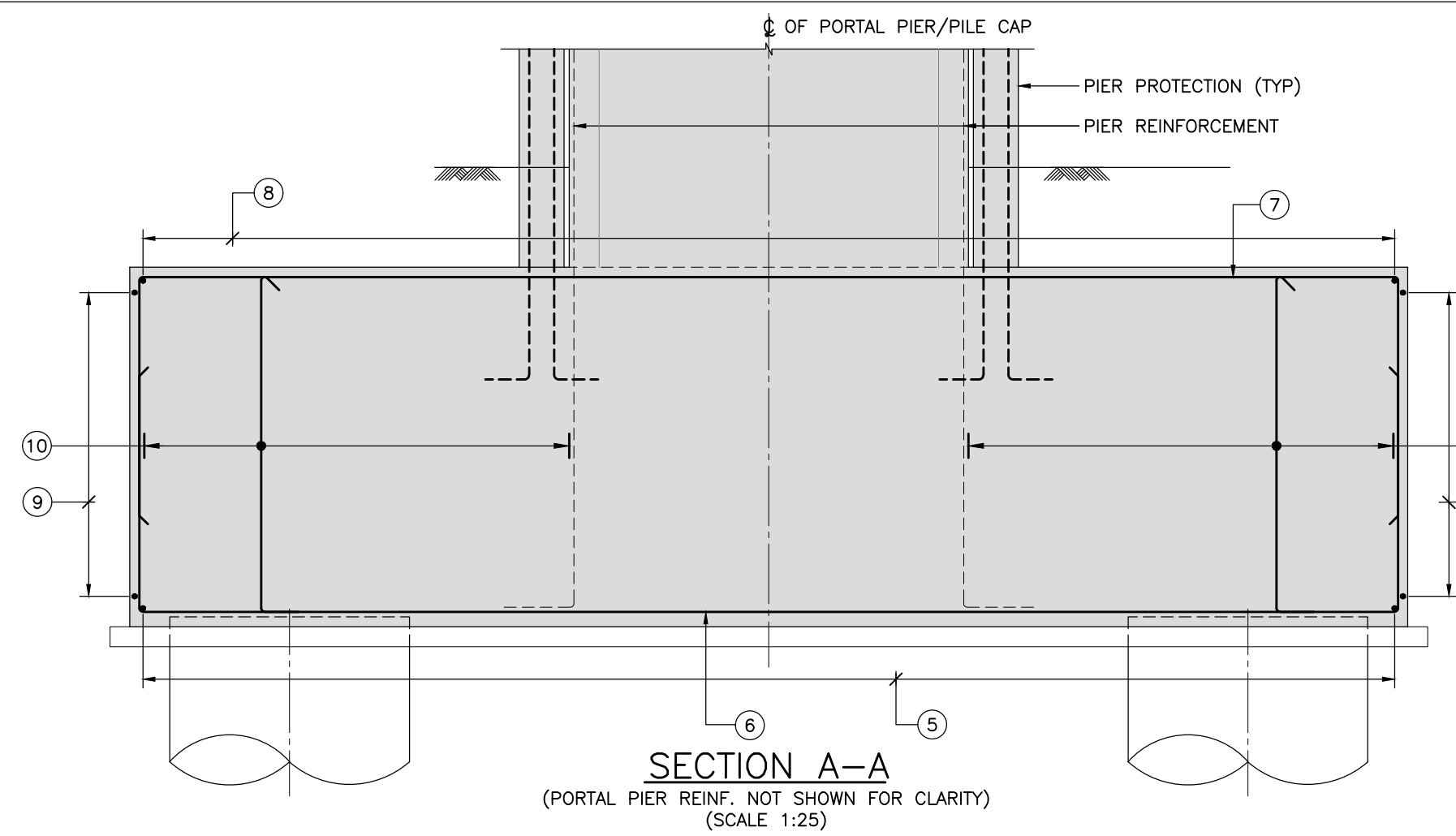
#### SCHEDULE OF REINFORCEMENT

ITEM	BAR MARK	BAR DIA.	SHAPE	TOTAL NOS./ SPACINGS	REMARKS
PILE	1	25	150	20 Nos.	VERTICAL BAR
	10	20		20 Nos.	VERTICAL BAR
	2	10		115 PITCH HELICAL REINFORCEMENT	
	3	16		1500 c/c	RING
PILE CAP	4	16		300 c/c	RING
	5	25	1200	125 c/c	BOTTOM BAR
	6	25	1200	125 c/c	BOTTOM BAR
	7	25	1200	125 c/c	TOP BAR
PIER	8	25	1200	125 c/c	TOP BAR
	9	12		140 c/c	SIDE FACE BAR
	10	16		250 c/c	LONGITUDINAL TRANSVERSE DIRECTION
	11	25	350	2x17 Nos.	
	12	32	350	2x13 Nos.	
	13				NOT USED
	14	10		150 c/c	6 LEGGED
	15	10		150 c/c	6 LEGGED
	16	10		150 c/c	2 LEGGED
	17				NOT USED
PIER	18	10		150 c/c	2 LEGGED
	19	20		125 c/c	
	20	16		3 LAYER	6 LEGGED
	21	32		1 No.	
	22	10		7 Nos.	

#### REFERENCE DRAWINGS:

- 022077-BSRP-CR2-C-V0-GEN-10-2007 TO 2015...GENERAL ARRANGEMENT DRAWING FOR VIADUCT PORTION FOR CH. 13+563.903km TO CH. 16+461.903km
- 022077-BSRP-CR2-C-V0-0-20-1655...DIMENSION DETAILS OF FOUNDATION AND SUBSTRUCTURE FOR PORTAL PIER PP181-2
- 022077-BSRP-CR2-C-V0-0-20-1657...DIMENSION DETAILS OF PORTAL BEAM FOR PORTAL PIER PP181-2
- 022077-BSRP-CR2-C-V0-0-20-1762...REINFORCEMENT DETAILS OF PORTAL BEAM FOR PORTAL PIER PP181-2
- 022077-BSRP-CR2-C-V0-GEN-20-5000...GENERAL NOTES
- 022077-BSRP-CR2-C-V0-GEN-10-1652...DIMENSIONAL & REINFORCEMENT DETAIL OF PIER PROTECTION
- 022077-BSRP-CR2-C-V0-GEN-10-1738...TYPICAL DETAIL OF EARTHING BAR
- 022077-BSRP-CR2-C-V0-GEN-30-1738...TYPICAL DETAIL OF DRAINAGE SCHEME AT PORTAL PIER LOCATION
- 022077-BSRP-CR2-C-V0-GEN-10-1657 & 022077-BSRP-CR2-C-V0-GEN-10-1658 ...INTERFACE DETAILS DRAWING.

**GOOD FOR CONSTRUCTION**



#### NOTES:

- ALL DIMENSIONS ARE IN MILLIMETERS, LEVELS ARE IN METERS UNLESS OTHERWISE.
- DIMENSIONS SHALL NOT BE SCALED FROM THE DRAWING. ONLY WRITTEN DIMENSIONS SHALL BE FOLLOWED.
- FOR PORTAL BEAM AND BEARING DETAILS REFER SEPARATE DRAWING.
- REINFORCEMENT STEEL SHALL BE HYSD BARS OF GRADE Fe500 FOR ALL R.C.C WORKS. DURABILITY REQUIREMENTS FOR CORROSION CONTROL SHALL BE AS PER IRS CBC AND AS PER TENDER.
- MINIMUM CLEAR COVER TO ANY REINFORCEMENT SHALL BE 75MM FOR PILE & PILECAP & 50MM FOR PIER. COVER TO BE MEASURED FROM INNER MOST SURFACE OF GROUT IF ANY.
- CLEAR COVER BETWEEN PILE CUT OFF TO MAIN STEEL BE 25MM.
- DEVELOPMENT LENGTH SHALL BE AS GIVEN BELOW :

GRADE OF CONCRETE	M35	M50
DEVELOPMENT LENGTH	46 $\phi$	41 $\phi$
LAP LENGTH	65 $\phi$	58 $\phi$

WHERE  $\phi$  IS THE DIA. OF BAR.  
CENTER DISTANCE OF THE SPLICES SHALL NOT BE LESS THAN 1.3 TIMES LAP LENGTH.
- LAP SHALL GENERALLY BE AVOIDED, IF REQUIRED LAPS SHALL BE STAGGERED & NOT MORE THAN 50% OF BAR SHALL BE LAPPED AT ANY SECTION.
- BENDING OF REINFORCEMENT SHALL CONFIRM TO IS:2502 LATEST REVISION.
- LAPPING IS NOT ALLOWED IN PILE UP TO DEPTH OF FIXITY.

#### LEGENDS:

- TOP REINFORCEMENT  
BOTTOM REINFORCEMENT  
H HYSD Fe500 BARS  
REINF REINFORCEMENT  
Ld DEVELOPMENT LENGTH

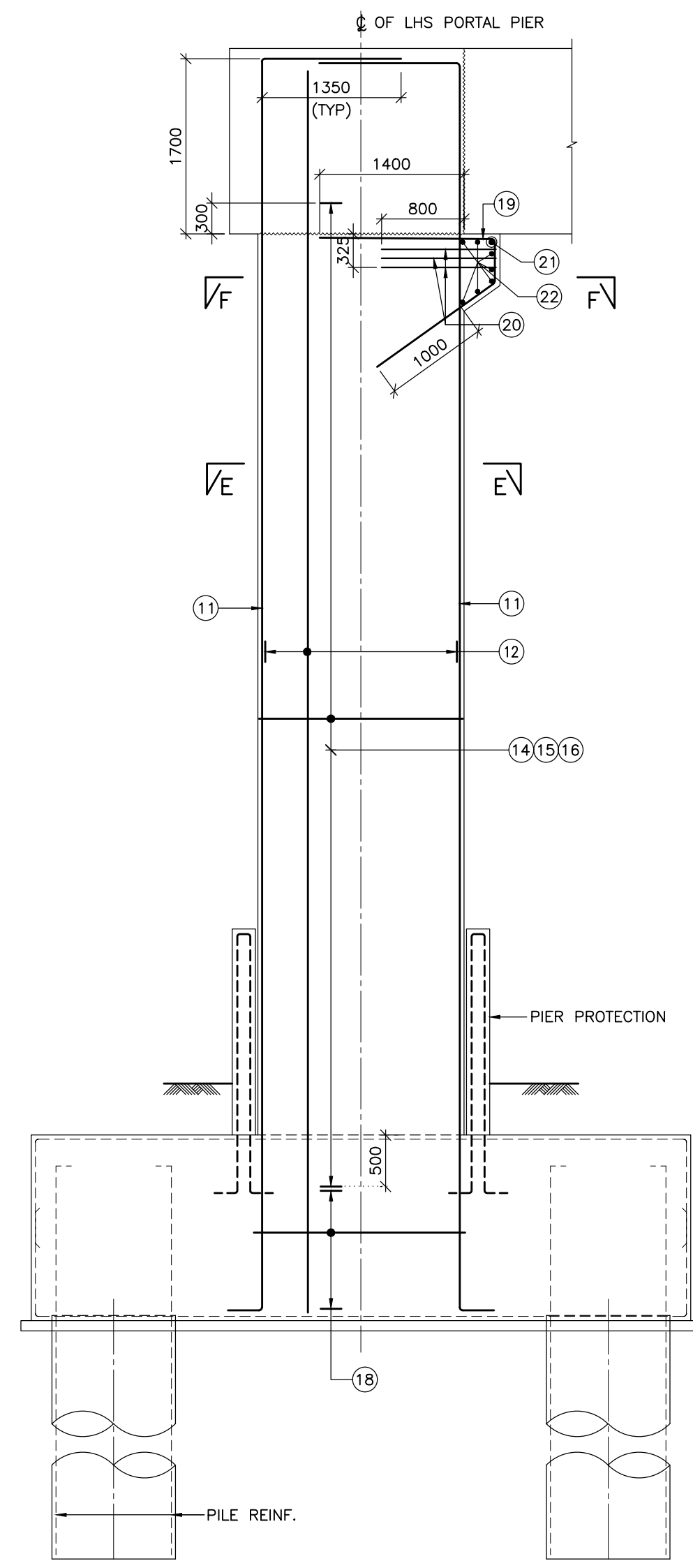
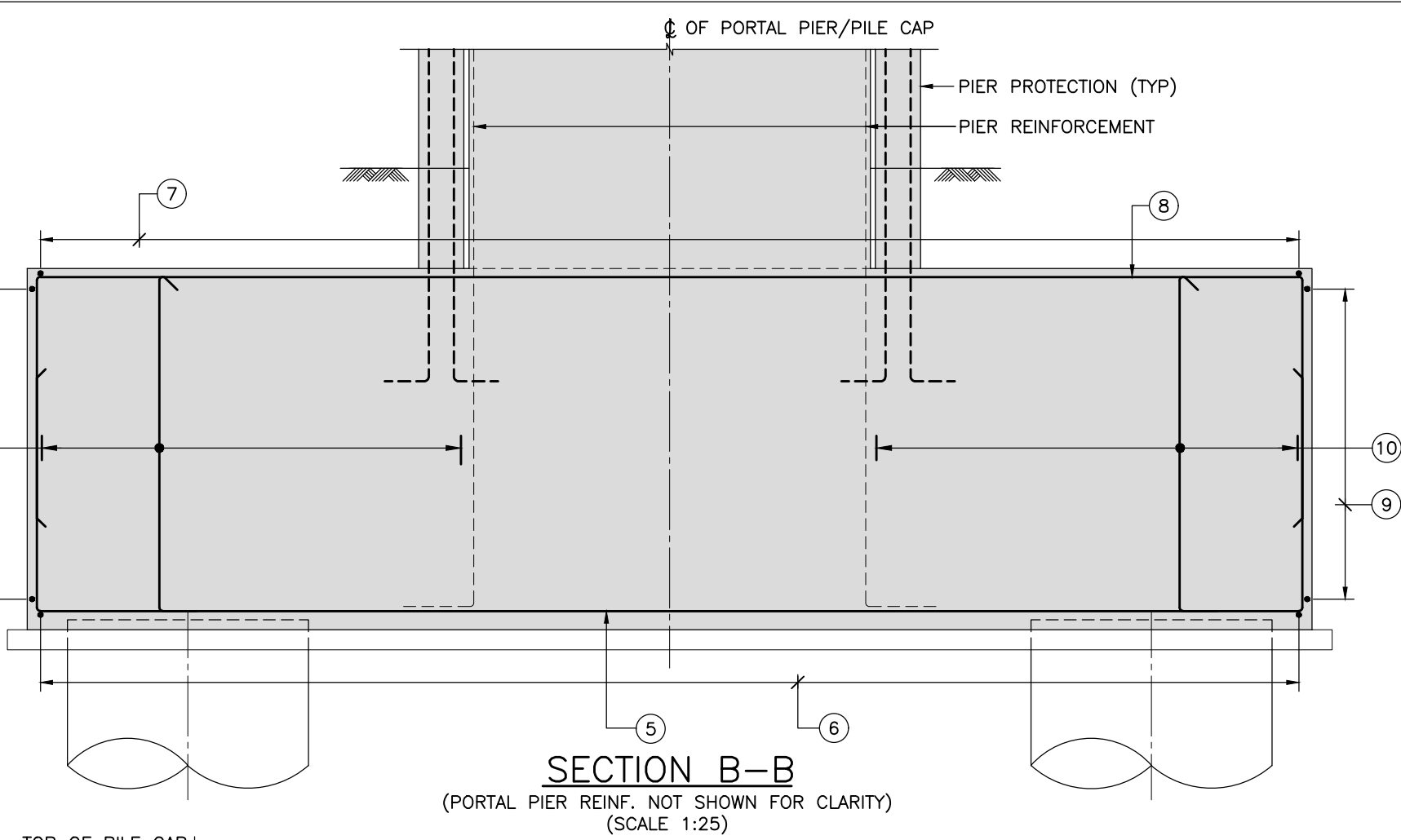
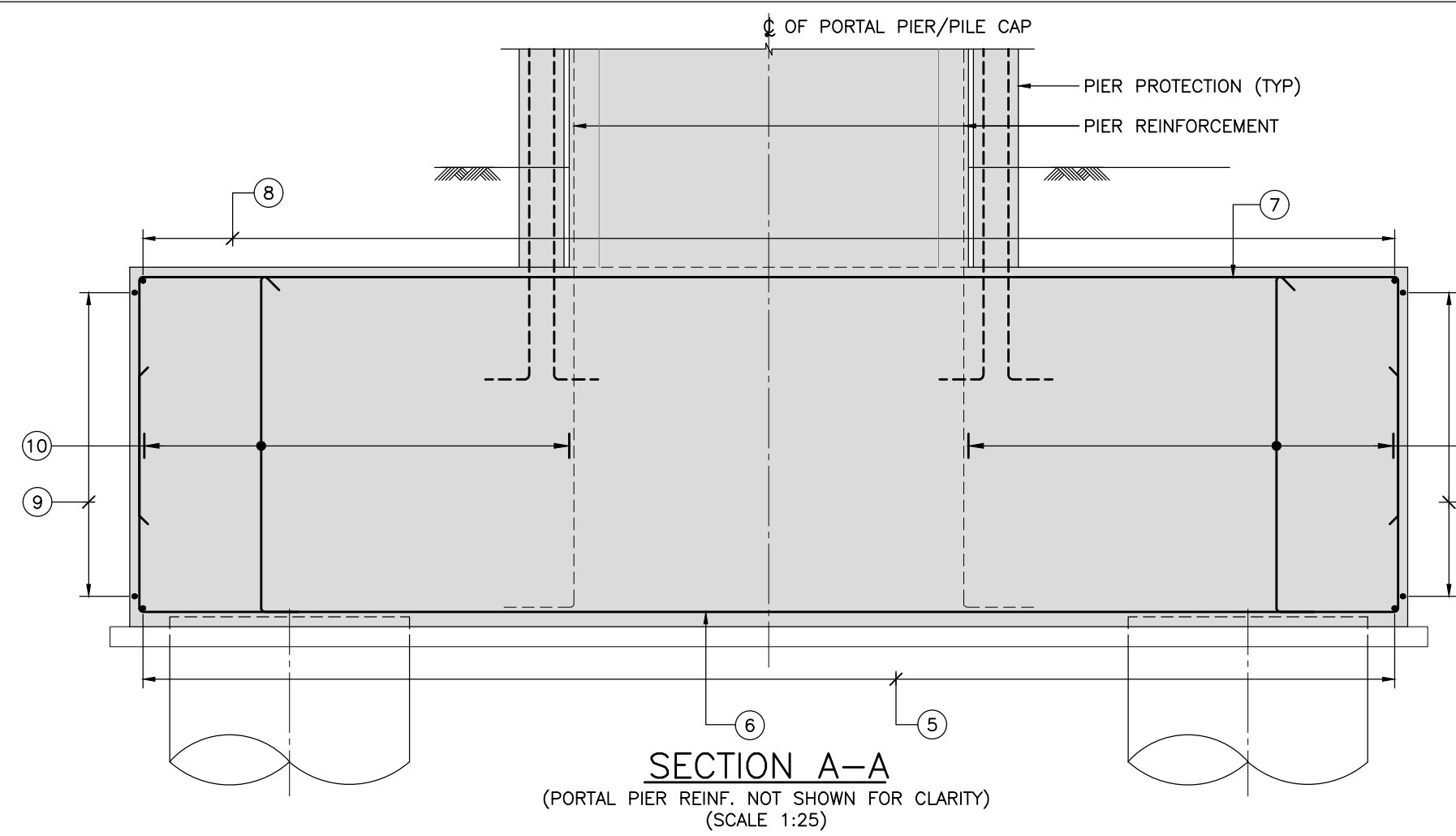
#### SCHEDULE OF REINFORCEMENT

ITEM	BAR MARK	BAR DIA.	SHAPE	TOTAL NOS./ SPACINGS	REMARKS
PILE	1	25	150	20 Nos.	VERTICAL BAR
	10	20		20 Nos.	VERTICAL BAR
	2	10		115 PITCH HELICAL REINFORCEMENT	
	3	16		1500 c/c	RING
PILE CAP	4	16		300 c/c	RING
	5	25	1200	125 c/c	BOTTOM BAR
	6	25	1200	125 c/c	BOTTOM BAR
	7	25	1200	125 c/c	TOP BAR
PIER	8	25	1200	125 c/c	TOP BAR
	9	12		140 c/c	SIDE FACE BAR
	10	16		250 c/c	LONGITUDINAL TRANSVERSE DIRECTION
	11	25	350	2x17 Nos.	
	12	32	350	2x13 Nos.	
	13				NOT USED
	14	10		150 c/c	6 LEGGED
	15	10		150 c/c	6 LEGGED
	16	10		150 c/c	2 LEGGED
	17				NOT USED
PIER	18	10		150 c/c	2 LEGGED
	19	20		125 c/c	
	20	16		3 LAYER	6 LEGGED
	21	32		1 No.	
	22	10		7 Nos.	

#### REFERENCE DRAWINGS:

- 022077-BSRP-CR2-C-V0-GEN-10-2007 TO 2015...GENERAL ARRANGEMENT DRAWING FOR VIADUCT PORTION FOR CH. 13+563.903km TO CH. 16+461.903km
- 022077-BSRP-CR2-C-V0-0-20-1655...DIMENSION DETAILS OF FOUNDATION AND SUBSTRUCTURE FOR PORTAL PIER PP181-2
- 022077-BSRP-CR2-C-V0-0-20-1657...DIMENSION DETAILS OF PORTAL BEAM FOR PORTAL PIER PP181-2
- 022077-BSRP-CR2-C-V0-0-20-1762...REINFORCEMENT DETAILS OF PORTAL BEAM FOR PORTAL PIER PP181-2
- 022077-BSRP-CR2-C-V0-GEN-20-5000...GENERAL NOTES
- 022077-BSRP-CR2-C-V0-GEN-10-1652...DIMENSIONAL & REINFORCEMENT DETAIL OF PIER PROTECTION
- 022077-BSRP-CR2-C-V0-GEN-10-1738...TYPICAL DETAIL OF EARTHING BAR
- 022077-BSRP-CR2-C-V0-GEN-30-1738...TYPICAL DETAIL OF DRAINAGE SCHEME AT PORTAL PIER LOCATION
- 022077-BSRP-CR2-C-V0-GEN-10-1657 & 022077-BSRP-CR2-C-V0-GEN-10-1658 ...INTERFACE DETAILS DRAWING.

**GOOD FOR CONSTRUCTION**



#### NOTES:

- ALL DIMENSIONS ARE IN MILLIMETERS, LEVELS ARE IN METERS UNLESS OTHERWISE.
- DIMENSIONS SHALL NOT BE SCALED FROM THE DRAWING. ONLY WRITTEN DIMENSIONS SHALL BE FOLLOWED.
- FOR PORTAL BEAM AND BEARING DETAILS REFER SEPARATE DRAWING.
- REINFORCEMENT STEEL SHALL BE HYSD BARS OF GRADE Fe500 FOR ALL R.C.C WORKS. DURABILITY REQUIREMENTS FOR CORROSION CONTROL SHALL BE AS PER IRS CBC AND AS PER TENDER.
- MINIMUM CLEAR COVER TO ANY REINFORCEMENT SHALL BE 75MM FOR PILE & PILECAP & 50MM FOR PIER. COVER TO BE MEASURED FROM INNER MOST SURFACE OF GROUT IF ANY.
- CLEAR COVER BETWEEN PILE CUT OFF TO MAIN STEEL BE 25MM.
- DEVELOPMENT LENGTH SHALL BE AS GIVEN BELOW :

GRADE OF CONCRETE	M35	M50
DEVELOPMENT LENGTH	46 $\phi$	41 $\phi$
LAP LENGTH	65 $\phi$	58 $\phi$

WHERE  $\phi$  IS THE DIA. OF BAR.  
CENTER DISTANCE OF THE SPLICES SHALL NOT BE LESS THAN 1.3 TIMES LAP LENGTH.
- LAP SHALL GENERALLY BE AVOIDED, IF REQUIRED LAPS SHALL BE STAGGERED & NOT MORE THAN 50% OF BAR SHALL BE LAPPED AT ANY SECTION.
- BENDING OF REINFORCEMENT SHALL CONFIRM TO IS:2502 LATEST REVISION.